



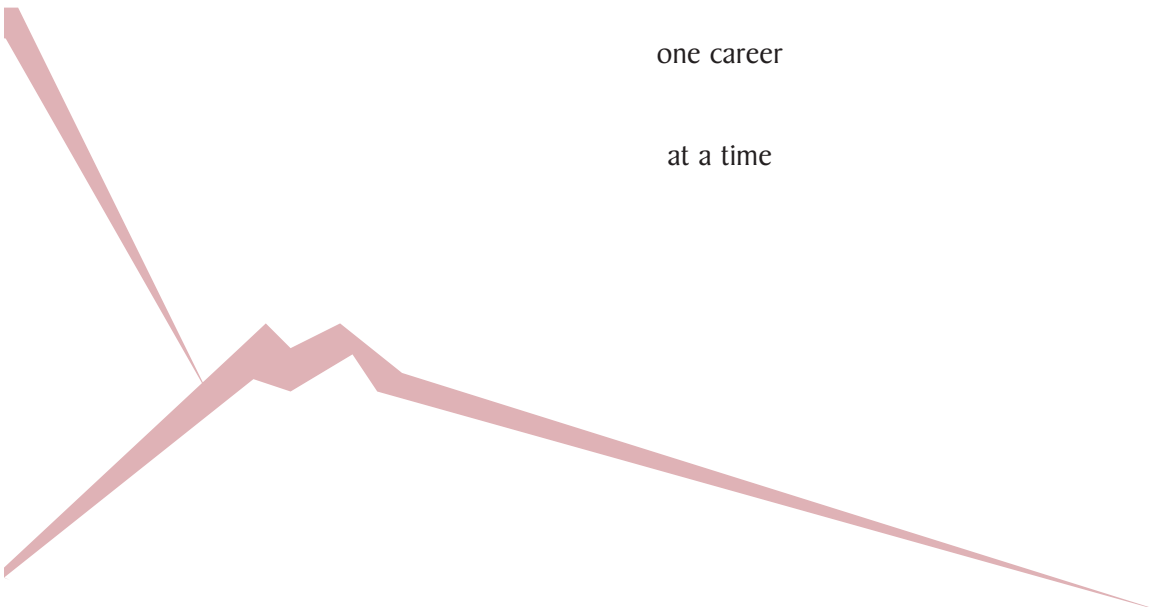
**PINNACLE GROUP**  
INTERNATIONAL

Building businesses

one relationship

one career

at a time



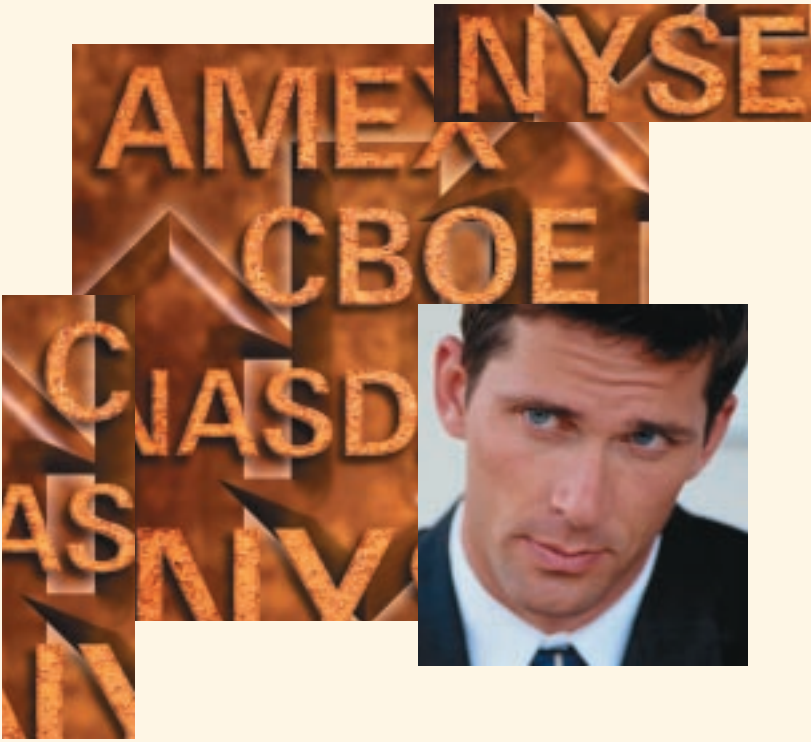


**PINNACLE GROUP**  
INTERNATIONAL

Partnering with you  
to reach the pinnacle  
in your business

For the past 15 years,  
we have distinguished ourselves  
as a dynamic, innovative  
executive recruiting firm  
focused on consistently superior  
service, industry expertise  
and long-lasting  
personal relationships.





## OUR CLIENTS

- ▲ LBO and Venture Capital Firms
- ▲ Investment and Merchant Banks
- ▲ Mezzanine Funds and Debt Funds
- ▲ Real Estate Investment Firms
- ▲ Fund of Funds and Secondary Funds
- ▲ Hedge Funds

We have developed a unique, targeted approach to help our clients' businesses grow their professional teams at the following levels:

- ▲ Analyst
- ▲ Associate
- ▲ Vice President
- ▲ Principal
- ▲ Partner

As executive recruiters focused on the financial industry, we have built a business based on trust, integrity, professionalism and consistency. We have

worked on Wall Street, in operating companies and law firms. This diverse experience offers us a unique blend of industry knowledge and savvy innovation that we combine with a keen insight into our clients' businesses and a genuine interest in the candidates we represent.

**OUR  
CLIENT'S  
VISION  
BECOMES  
OUR OWN**

At Pinnacle Group International, our relationships with our clients and candidates are based on these simple but critical strengths:

- ▲ Trust and Personal Service
- ▲ Discretion and Confidentiality
- ▲ Integrity and Consistency
- ▲ Responsiveness and Professionalism





We know that what we do makes a difference in the success of the companies in which we place candidates and in the lives of the people who build those companies. We partner with our clients to understand the uniqueness of each company and its culture. Our ability to pinpoint those specific traits and skills in each candidate is unparalleled. We leverage our innovative resources to identify that one person who will enhance your team and help them to see the opportunity for all it can be.

When you hire professionals to enrich your team, count on Pinnacle Group for the most comprehensive and personalized search.

**BUILDING  
THE RIGHT  
TEAM  
MAKES  
ALL THE  
DIFFERENCE**

**WE KNOW  
OUR CLIENTS,  
WE KNOW  
WHO FITS**

We set the standard by providing our clients and candidates with truly personalized service based on trust, integrity and great relationships. Specifically, we really know our clients. We are not just names on a website or voices on the phone. We meet our clients personally, visit their offices and learn what distinguishes each client from its competitors. Getting a thorough understanding of the position a client is trying to fill is just the beginning of a successful search.



Meeting our client's goals and expectations means having access to a well-developed candidate pool and keen insight into people.

An executive recruiter needs to know the people, not just how to sift through hundreds of resumes. We set ourselves apart by meeting our candidates and learning what makes them each exceptional, clarifying the components of an ideal fit – personally and professionally.

We have created a valuable stream of exceptional candidates and a deep professional network to identify candidates by education, skill set, industry experience and other valuable criteria.

**WE BUILD  
RELATIONSHIPS  
ON A  
FOUNDATION  
OF INSIGHT  
AND EXPERIENCE**





**FINDING  
THE RIGHT  
PERSON,  
SAVING  
YOU  
TIME**

Our job is more than simply presenting resumes. We screen prospective candidates to ensure each individual meets not just the technical requirements of the job, but the intangible characteristics that lead to a successful match. Only candidates who have expressed a clear interest in pursuing a particular position and have given us permission to release their background are presented. Throughout the interview process we serve as facilitators, providing feedback and guidance to both the client and the candidate. We will participate in negotiation of the terms of the offer, complete reference checks, if appropriate, and support you as your new team member "settles in" for the long haul.



[www.pinnaclegroup.com](http://www.pinnaclegroup.com)